

Tusmore and Shelswell Parks CTA (Conservation Target Area)

This area encompasses the parks and woodlands at Tusmore and Shelswell Parks and a number of ancient woodlands near Stoke Lyne.

Joint Character Area: Cotswolds and West Anglian Plain.

Landscape Types: Wooded Estate land plus a small area of Farmland Plateau (though this area includes a large wood).

Geology: Limestone with some mudstone and limestone mixtures to the south. Extensive glacial sand and gravel deposits in the parklands with alluvium along streams.

Topography: largely flat plateau land intersected by shallow valleys.

Area of CTA: 844 hectares

Biodiversity:

- Parkland: Large parks at Tusmore and Shelswell, though the importance of these have not been assessed, with large areas of woodland.
- Lowland Mixed Deciduous Woodland: Besides the Park woodlands there are a number of ancient woodland sites near Stoke Lyne.
- Other habitats: the parks have lakes. On the northern side of Shelswell Park, Cottisford Pond is a Local Wildlife Site along with the adjacent wet woodland.

Access: Stoke Wood is a Woodland Trust nature reserve. Otherwise access is restricted to bridleways and footpaths.

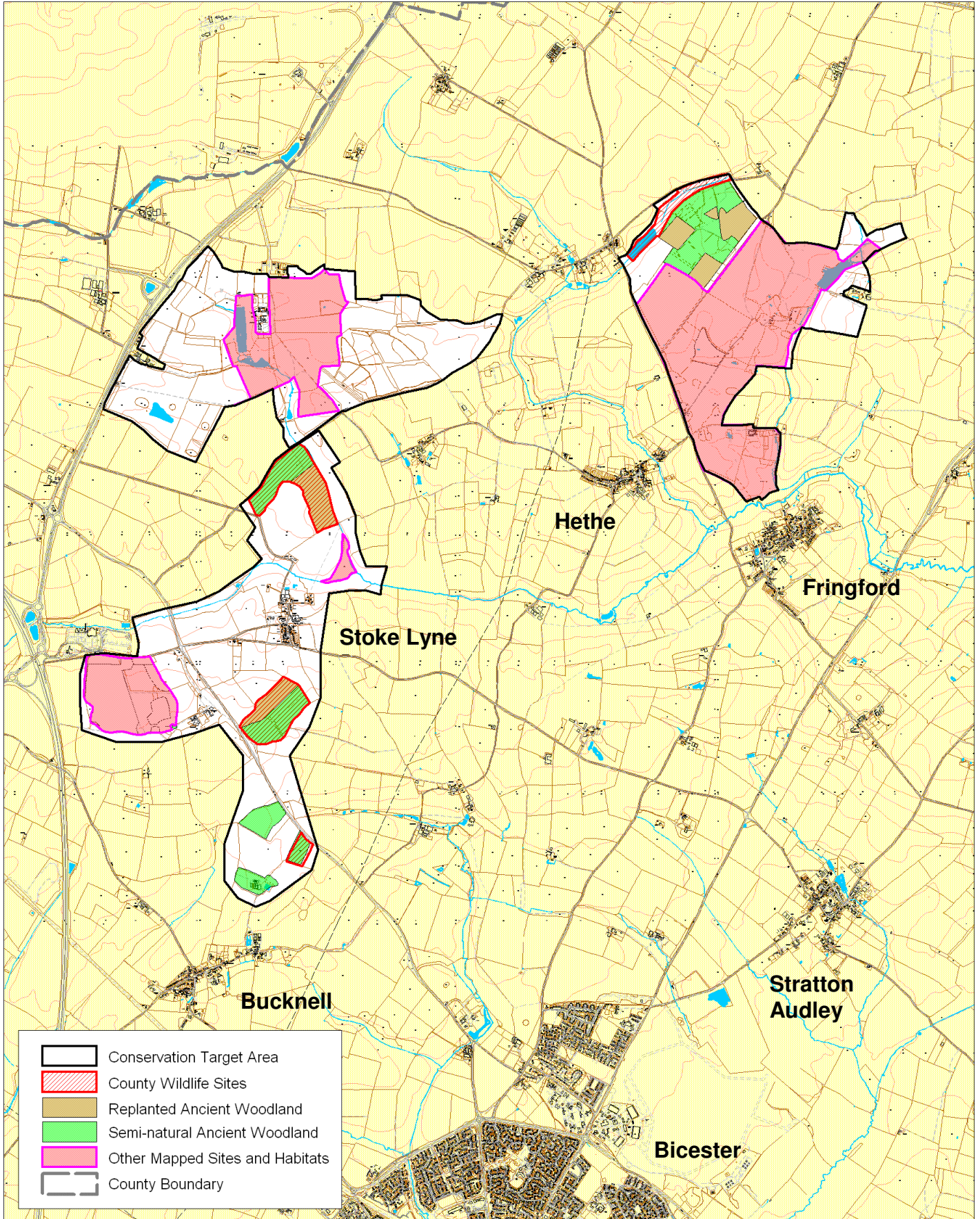
Archaeology:

Oxfordshire Biodiversity Action Plan Targets associated with this CTA:

1. Lowland mixed deciduous woodland – management¹ and creation (possibly some planting to link sites).
2. Parkland (including veteran trees) - management and restoration.

¹ "Management" implies both maintaining the quantity, and maintaining and improving the quality of existing BAP habitat and incorporates the following target definitions: "Maintaining extent" and "Achieving Condition".

Tusmore and Shelswell Parks with Stoke Lyne Woodlands Conservation Target Area



Area of BAP habitat present in CTA (from TVERC BAP Habitat GIS layer 5/2010)

Tusmore and Shelswell Park CTA	Lowland Calcareous Grassland	Lowland Dry Acid Grassland	Lowland Meadows	Coastal and Floodplain Grazing Marsh	Eutrophic Standing Waters	Lowland Fens	Reedbeds	Lowland Beech and Yew Woodland	Lowland Mixed Deciduous Woodland	Wet Woodland	Wood - Pasture and Parkland	Traditional Orchards
Area of BAP Habitat in CTA (ha)					1.8				108.1	5.1	142.8	0.1
% of CTA area					0.2				12.8	0.6	16.9	0.0
% of county resource					0.2				2.3	3.7	7.7	0.0