

Thame Park CTA (Conservation Target Area)

A fairly large but rather isolated area that encompasses Thame Park.

Joint Character Area: Thames and Avon Vales

Landscape type: Rolling Clayland.

Geology: Gault Clay with Head (Clay, Silt Sand and Gravel) and alluvium along the Cuttle Brook and other streams.

Topography: Flat to the north along the Cuttle Brook. The south western part is a low hill and the east is on the gentle slopes of another low hill.

Area of CTA: 274 hectares

Biodiversity:

- Parkland: Large area of sheep grazed parkland with many veteran oak trees.
- Other habitat: there is one large area of woodland and a lake within the Park.

Access: there is one footpath through the site

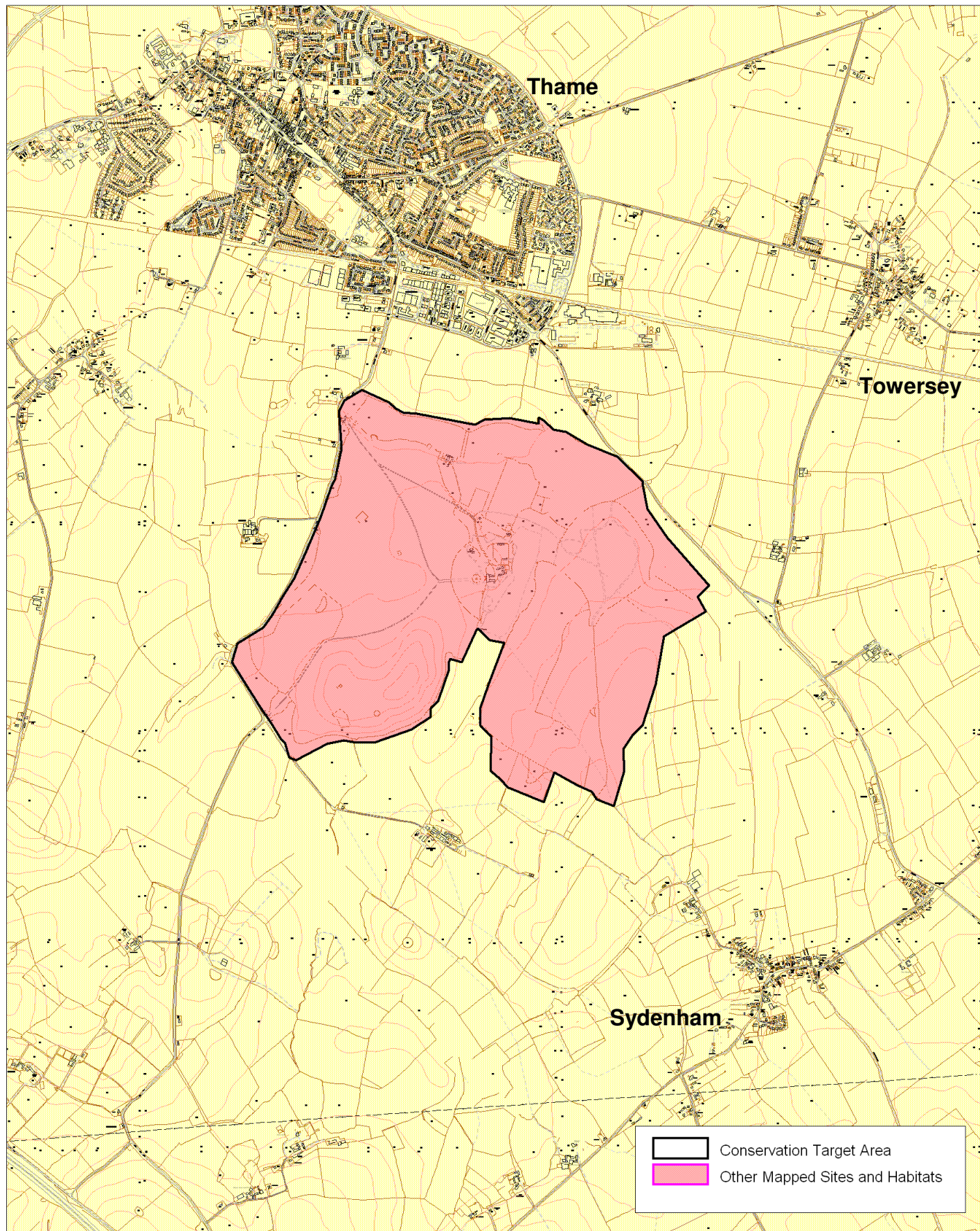
Archaeology: Remains of a Cistercian Abbey

Oxfordshire Biodiversity Action Plan Targets associated with this CTA:

1. Parkland (and veteran trees) - management¹ and restoration.

¹ "Management" implies both maintaining the quantity, and maintaining and improving the quality of existing BAP habitat and incorporates the following target definitions: "Maintaining extent" and "Achieving Condition".

Thame Park Conservation Target Area



Area of BAP habitat present in CTA (from TVERC BAP Habitat GIS layer 5/2010)

Thame Park CTA	Lowland Calcareous Grassland	Lowland Dry Acid Grassland	Lowland Meadows	Coastal and Floodplain Grazing Marsh	Eutrophic Standing Waters	Lowland Fens	Reedbeds	Lowland Beech and Yew Woodland	Lowland Mixed Deciduous Woodland	Wet Woodland	Wood - Pasture and Parkland	Traditional Orchards
Area of BAP Habitat in CTA (ha)									20.7		118.9	0.1
% of CTA area									7.6		43.4	0.0
% of county resource									0.4		6.4	0.0