

Chilterns Escarpment South Central CTA (Conservation Target Area)

This part of the escarpment runs from Hailey to Woodcote.

Joint Character Area: Chilterns

Landscape Types: Wooded Estate Slopes and Valley Sides.

Geology: Chalk

Topography: A steep escarpment. Though generally north-west facing dry valleys run into the Chilterns plateau and there are some south and north facing slopes.

Area of CTA: 454 hectares

Biodiversity:

- Woodland: Beech woodland and lowland mixed deciduous woodland is abundant on these slopes. Dean Wood and Hammonds Wood and North Grove are Local Wildlife Sites and there are many Chiltern Heritage Woodlands which are proposed Local Wildlife Sites.
- Chalk grassland. Less extensive here than the northern and southern sections of the escarpment and found in a few small sites at Warren Bank, Berins Hill Bank and Langtree House Bank. The steep chalk slopes have good potential to extend these areas.

Access: Largely restricted to bridleways and footpaths. North Grove is a Woodland Trust Reserve and Warren Bank is a BBOWT nature reserve.

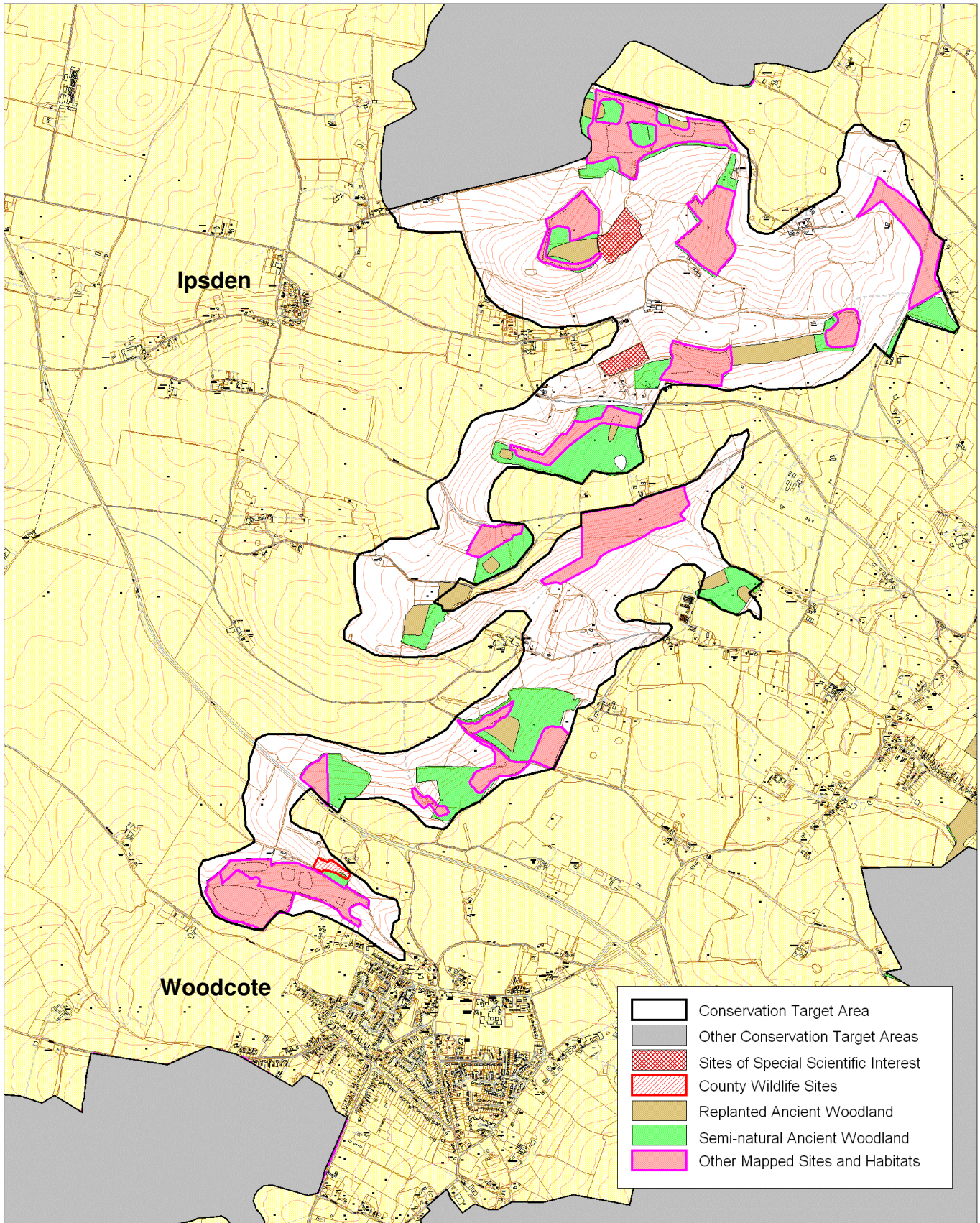
Archaeology:

Oxfordshire Biodiversity Action Plan Targets associated with this CTA:

1. Woodland (beech and yew and lowland mixed deciduous) – management and restoration.
2. Chalk (lowland calcareous) grassland – management¹, restoration and creation.

¹ “Management” implies both maintaining the quantity, and maintaining and improving the quality of existing BAP habitat and incorporates the following target definitions: “Maintaining extent” and “Achieving Condition”.

Chilterns Escarpment South Central



Area of BAP habitat present in CTA (from TVERC BAP Habitat GIS layer 5/2010) and 2015 BAP Habitat Targets for this CTA

Chilterns Escarpment South Central CTA	Lowland Calcareous Grassland	Lowland Dry Acid Grassland	Lowland Meadows	Coastal and Floodplain Grazing Marsh	Eutrophic Standing Waters	Lowland Fens	Reedbeds	Lowland Beech and Yew Woodland	Lowland Mixed Deciduous Woodland	Wet Woodland	Wood - Pasture and Parkland	Traditional Orchards
Area of BAP Habitat in CTA (ha)	3.7							123.4	30.9			0.1
% of CTA area	0.8							27.2	6.8			0.0
% of county resource	0.5							15.6	0.7			0.0
2015 BAP targets (hectares)	Lowland Calcareous Grassland	Lowland Dry Acid Grassland	Lowland Meadows	Coastal and Floodplain Grazing Marsh	Eutrophic Standing Waters – No targets for 2015	Lowland Fens	Reedbeds	Native Woodland			Wood - Pasture and Parkland Targets not divided by CTA	Traditional Orchards - No targets for 2015
Maintenance (to be determined)	-	-	-	-	-	-	-		-		-	-
Achieving Condition (to be determined)	-	-	-	-	-	-	-		-		-	-
Restoration	59 ^a (with North and Central)				-		-		4		-	-
Creation	61 ^a (with North and Central)				-	-					-	-

^a Joint figure for Chilterns Escarpment CTAs: North, Central and South Central.