

Chilterns Escarpment South CTA (Conservation Target Area)

This is the escarpment from Goring to Mapledurham and includes some dry valleys that cut into the Chilterns plateau.

Joint Character Area: Chilterns

Landscape Types: Wooded Estate Slopes and Valley Sides.

Geology: Chalk

Topography: Steep west and south facing escarpment and steep banked dry valleys running east and north.

Area of CTA: 763 hectares

Biodiversity:

- Chalk grassland: Numerous banks of chalk grassland with concentrations near Goring and between Pangbourne and Mapledurham. Many are Local Wildlife Sites and there is also an SSSI at Hartslock.
- Woodland: There are a number of ancient woodland sites with beech and yew woodland especially near Goring which includes Hartslock SSSI. Further east Bottom Wood, near Hardwick, is the largest site.

Access: Largely restricted to bridleways and footpaths. There is a BBOWT nature reserve at Hartslock.

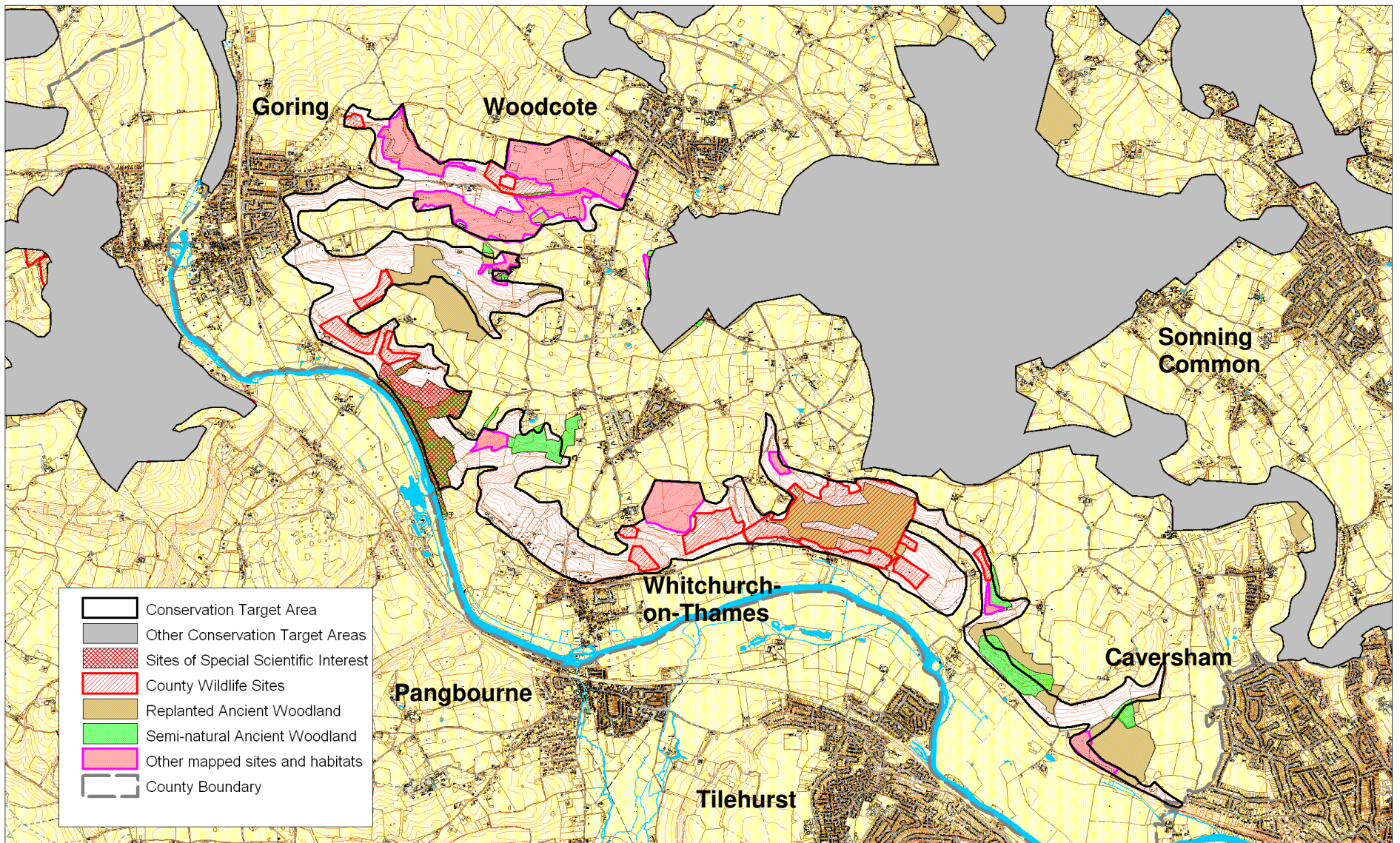
Archaeology:

Oxfordshire Biodiversity Action Plan Targets associated with this CTA:

1. Chalk (lowland calcareous) grassland – management¹ and restoration.
2. Woodland (lowland mixed deciduous and beech and yew) – management and restoration.
3. Lowland meadows – management.

¹ “Management” implies both maintaining the quantity, and maintaining and improving the quality of existing BAP habitat and incorporates the following target definitions: “Maintaining extent” and “Achieving Condition”.

Chilterns Escarpment South Conservation Target Area



Produced by Thames Valley Environmental Records Centre. Reproduced from the Ordnance Survey mapping with the permission of the Controller of Her Majesty's Stationary Office © Crown Copyright. Oxfordshire County Council Licence No LA076805

Scale 1:50000

Area of BAP habitat present in CTA (from TVERC BAP Habitat GIS layer 5/2010) and 2015 BAP Habitat Targets for this CTA

Chilterns Escarpment South CTA	Lowland Calcareous Grassland	Lowland Dry Acid Grassland	Lowland Meadows	Coastal and Floodplain Grazing Marsh	Eutrophic Standing Waters	Lowland Fens	Reedbeds	Lowland Beech and Yew Woodland	Lowland Mixed Deciduous Woodland	Wet Woodland	Wood - Pasture and Parkland	Traditional Orchards
Area of BAP Habitat in CTA (ha)	53.0		4.3					37.2	40.2			0.5
% of CTA area	6.9		0.6					4.9	5.3			0.1
% of county resource	7.2		0.4					4.7	0.9			0.2
2015 BAP targets (hectares)	Lowland Calcareous Grassland	Lowland Dry Acid Grassland	Lowland Meadows	Coastal and Floodplain Grazing Marsh	Eutrophic Standing Waters – No targets for 2015	Lowland Fens	Reedbeds	Native Woodland			Wood - Pasture and Parkland <small>Targets not divided by CTA</small>	Traditional Orchards - No targets for 2015
Maintenance (to be determined)	-	-	-	-	-	-	-	-			-	-
Achieving Condition (to be determined)	-	-	-	-	-	-	-	-			-	-
Restoration					-		-	22			-	-
Creation					-	-					-	-