

## **Chilterns Escarpment Central CTA (Conservation Target Area)**

This is the section of the escarpment between Swyncombe and Hailey.

**Joint Character Area:** Chilterns

**Landscape Types:** Wooded Estate Slopes and Valley Sides.

**Geology:** Chalk

**Topography:** A north-west facing escarpment. This section is less steep than other parts of the escarpment.

**Area of CTA:** 952 hectares

### **Biodiversity:**

- **Cereal Field Margins:** These support arable wildflowers such as shepherd's needle. There is a good diversity of other arable wildflowers in this area. Good numbers of fields have been managed with the conservation headlands as part of the Countryside Stewardship scheme.
- **Farmland Birds:** A significant part of a key area for farmland birds in the Chilterns is included in this target area. Species present include corn bunting, grey partridge, linnet and skylark.
- **Other habitats:** There are a few areas of ancient woodland and one chalk grassland site at Nuffield Common.

**Access:** Numerous bridleways are found here including the ridgeway.

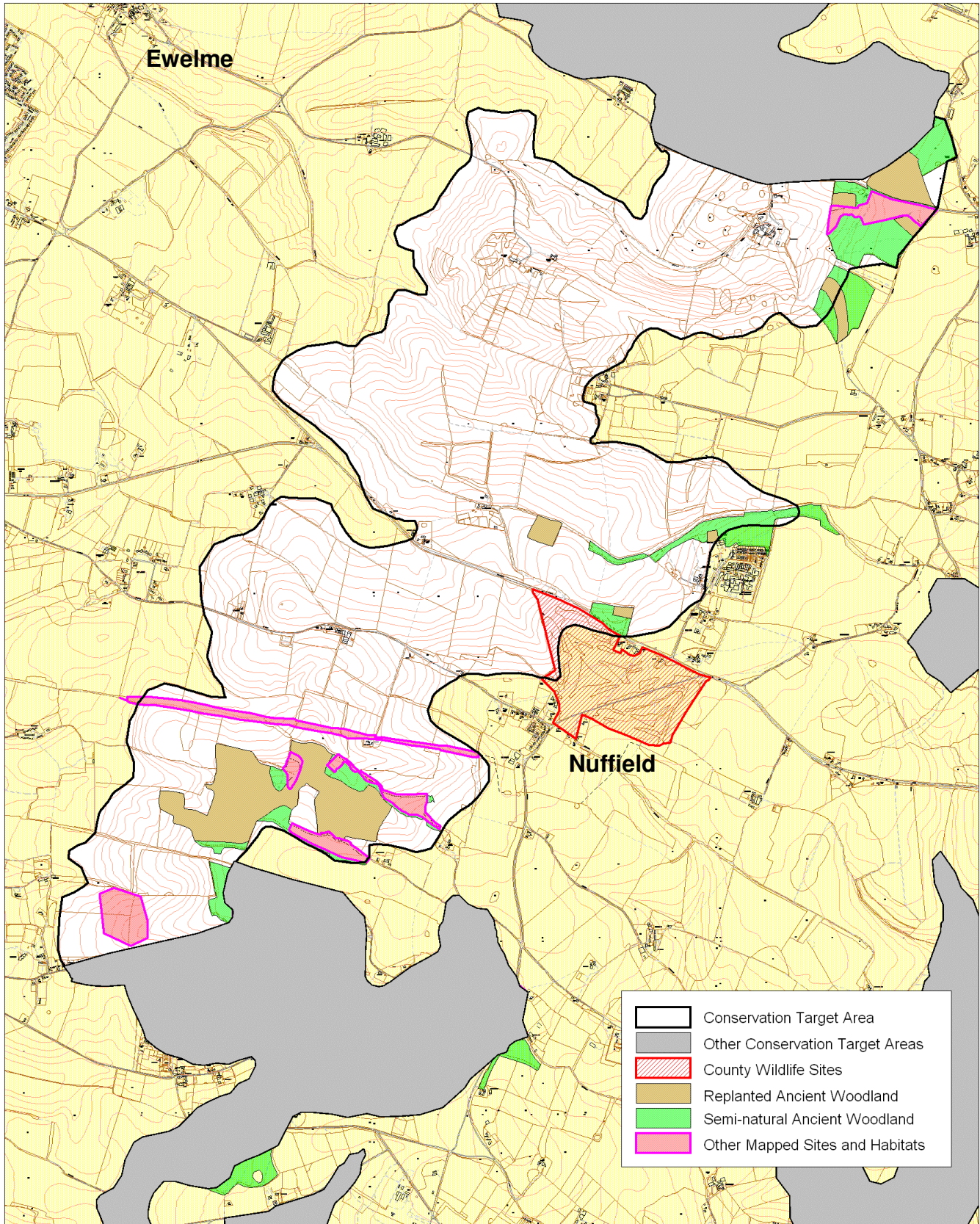
**Archaeology:** Grims Ditch crosses the area to the south.

### **Oxfordshire Biodiversity Action Plan Targets associated with this CTA:**

1. Arable Field Margins (and arable in-field options) – management<sup>1</sup> and creation (with particular emphasis on farmland birds and arable wildflowers).
2. Woodland (lowland mixed deciduous and beech and yew) – management and restoration.
3. Wood-pasture and parkland (and veteran trees) – management.

<sup>1</sup> "Management" implies both maintaining the quantity, and maintaining and improving the quality of existing BAP habitat and incorporates the following target definitions: "Maintaining extent" and "Achieving Condition".

# Chilterns Escarpment Central Conservation Target Area



**Area of BAP habitat present in CTA (from TVERC BAP Habitat GIS layer 5/2010) and 2015 BAP Habitat Targets for this CTA**

<b>Chilterns Escarpment Central CTA</b>	<b>Lowland Calcareous Grassland</b>	<b>Lowland Dry Acid Grassland</b>	<b>Lowland Meadows</b>	<b>Coastal and Floodplain Grazing Marsh</b>	<b>Eutrophic Standing Waters</b>	<b>Lowland Fens</b>	<b>Reedbeds</b>	<b>Lowland Beech and Yew Woodland</b>	<b>Lowland Mixed Deciduous Woodland</b>	<b>Wet Woodland</b>	<b>Wood - Pasture and Parkland</b>	<b>Traditional Orchards</b>
Area of BAP Habitat in CTA (ha)	0.3							33.5	54.3		62.6	
% of CTA area	0.0							3.5	5.7		6.6	
% of county resource	0.0							4.2	1.2		3.4	
<b>2015 BAP targets</b> (hectares)	<b>Lowland Calcareous Grassland</b>	<b>Lowland Dry Acid Grassland</b>	<b>Lowland Meadows</b>	<b>Coastal and Floodplain Grazing Marsh</b>	<b>Eutrophic Standing Waters – No targets for 2015</b>	<b>Lowland Fens</b>	<b>Reedbeds</b>	<b>Native Woodland</b>			<b>Wood - Pasture and Parkland</b> <small>Targets not divided by CTA</small>	<b>Traditional Orchards - No targets for 2015</b>
Maintenance (to be determined)	-	-	-	-	-	-	-	-			-	-
Achieving Condition (to be determined)	-	-	-	-	-	-	-	-			-	-
Restoration	59 <sup>a</sup> (with North and South Central)				-		-	11			-	-
Creation	61 <sup>a</sup> (with North and South Central)				-	-					-	-

<sup>a</sup> Joint figure for Chilterns Escarpment CTAs: North, Central and South Central.