

Chilterns Dipslope and Plateau CTA (Conservation Target Area)

This complex area consists of the steeper side of the chalk valleys that cut through the plateau and key areas of the plateau where the main areas of woodland and heathland remnants are found. These valleys run into Buckinghamshire to the north. Valleys with chalk grassland or significant woodland at the edge of the area are excluded along with the flat chalk areas at the heads of the valleys.

Joint Character Area: Chilterns

Landscape Types: Wooded Estate Slopes and Valley Sides along the valleys. Wooded Farmland on the plateau.

Geology: The valleys are chalk. On the plateau there are deposits of sand, gravel and clay with flints. Areas with clay with flints are largely excluded except where there are extensive woodland areas.

Topography: Narrow steep sided chalk valleys running from the north east to the south east cut through the flatter Chilterns plateau. **Area of CTA:** 5534 hectares

Biodiversity:

- Chalk Grassland: The steeper slopes support a number of relatively small chalk grassland sites.
- Woodland: There are with numerous areas of ancient woodland with beech woodland and some lowland mixed deciduous woodland including SSSI's at Bix, Pishill, Harpsden and Bear, Oveys and Greatbottom Wood. The plateau areas included extensive areas of woodland in the area running from Crays Pond to Sonning Common and south of Nettlebed. Woodland Trust Reserves include Ipsden Heath and Clayhill Wood.
- Heathland: This area includes remnants of heathland on the Chiltern Commons, in association with some of the woodland.
- Further areas of plateau land are found at Crowsley, where there is important parkland. acid grassland and lowland meadow habitat, Gillots Field and the adjacent geological SSSI at Henley are also included.
- Species: the arable land is important for arable wildflowers and farmland birds.

Access: Warburg Reserve at Bix, a number of areas of common land, a number of Woodland Trust Reserves, Gillots Field at Henley and many bridleways and footpaths.

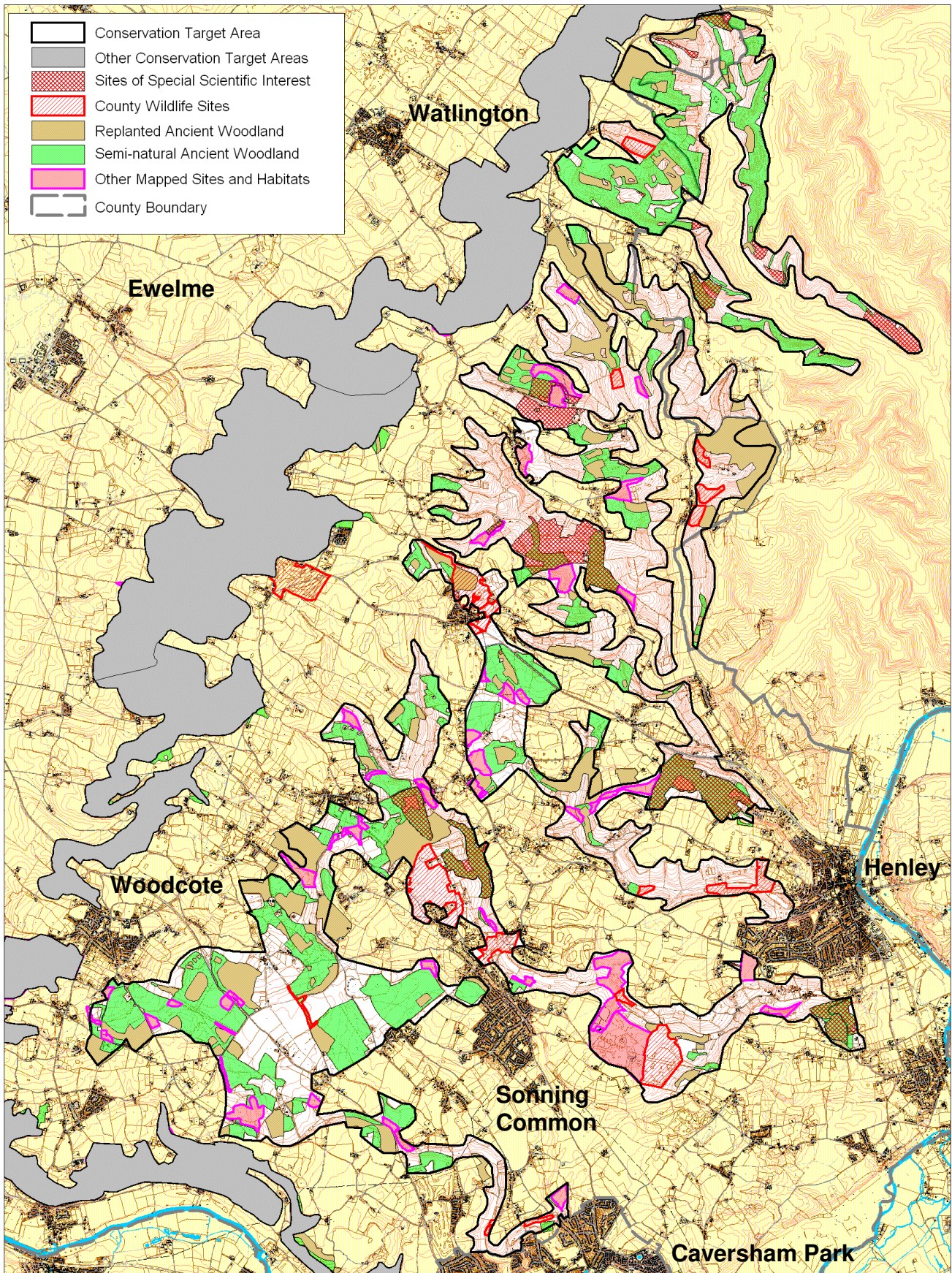
Archaeology:

Oxfordshire Biodiversity Action Plan Targets associated with this CTA:

1. Chalk (lowland calcareous) grassland – management¹, restoration and creation (along the valleys).
2. Lowland heathland and lowland dry acid grassland – management and restoration (on the plateau).
3. Woodland – management and restoration.
4. Wood-pasture and parkland (and veteran trees) – management.
5. Hedgerows – management, restoration and creation.
6. Arable field margins (and arable in-field options) – management and creation (with particular emphasis on farmland birds and arable wildflowers).
7. Traditional Orchards – management, restoration and creation.

¹ "Management" implies both maintaining the quantity, and maintaining and improving the quality of existing BAP habitat and incorporates the following target definitions: "Maintaining extent" and "Achieving Condition".

Chilterns Dipslope and Plateau Conservation Target Area



Produced by Thames Valley Environmental Records Centre. Reproduced from the Ordnance Survey mapping with the permission of the Controller of Her Majesty's Stationary Office © Crown Copyright. Oxfordshire County Council Licence No LA076805 Scale 1:80000

Area of BAP habitat present in CTA (from TVERC BAP Habitat GIS layer 5/2010) and 2015 BAP Habitat Targets for this CTA

Chilterns Dipslope and Plateau CTA	Lowland Calcareous Grassland	Lowland Dry Acid Grassland	Lowland Meadows	Coastal and Floodplain Grazing Marsh	Eutrophic Standing Waters	Lowland Fens	Lowland Heathland	Lowland Beech and Yew Woodland	Lowland Mixed Deciduous Woodland	Wet Woodland	Wood - Pasture and Parkland	Traditional Orchards
Area of BAP Habitat in CTA (ha)	42.7	3.5	32.2				2.3	269.6	162.8		108.9	12.9
% of CTA area	0.8	0.1	0.6				0.0	4.9	2.9		2.0	0.2
% of county resource	5.8	7.1	3.0				76.7	34.0	3.5		5.9	3.9
2015 BAP targets (hectares)	Lowland Calcareous Grassland	Lowland Dry Acid Grassland	Lowland Meadows	Coastal and Floodplain Grazing Marsh	Eutrophic Standing Waters – No targets for 2015	Lowland Fens	Lowland Heathland No targets for 2015	Native Woodland			Wood - Pasture and Parkland Targets not divided by CTA	Traditional Orchards - No targets for 2015
Maintenance (to be determined)	-	-	-	-	-	-	-	-			-	-
Achieving Condition (to be determined)	-	-	-	-	-	-	-	-			-	-
Restoration	5		3		-		-	142			-	-
Creation	2		2		-	-	-				-	-